

Tooth Fairy Graph



Bob
10-03

Tom
1-17



Susie
9-21

Anne
11-05

Peg
3-14

Jill
4-01

I laminated the “Boys” and “Girls” pages and hung them on the wall as shown above. Near the graph I placed a small bucket with multiple blank copies of the teeth on page 4 (I didn’t cut the teeth out; just cut the paper into fourths on the paper chopper).

When a student lost a tooth, they could get a tooth from the bucket and write their name and the date they lost the tooth. Then they cut out the tooth shape and taped it beside “Boys” or “Girls”.

This was a simple way to incorporate graphing skills throughout the year and it was relevant to students because well, you know how first graders are about losing teeth!

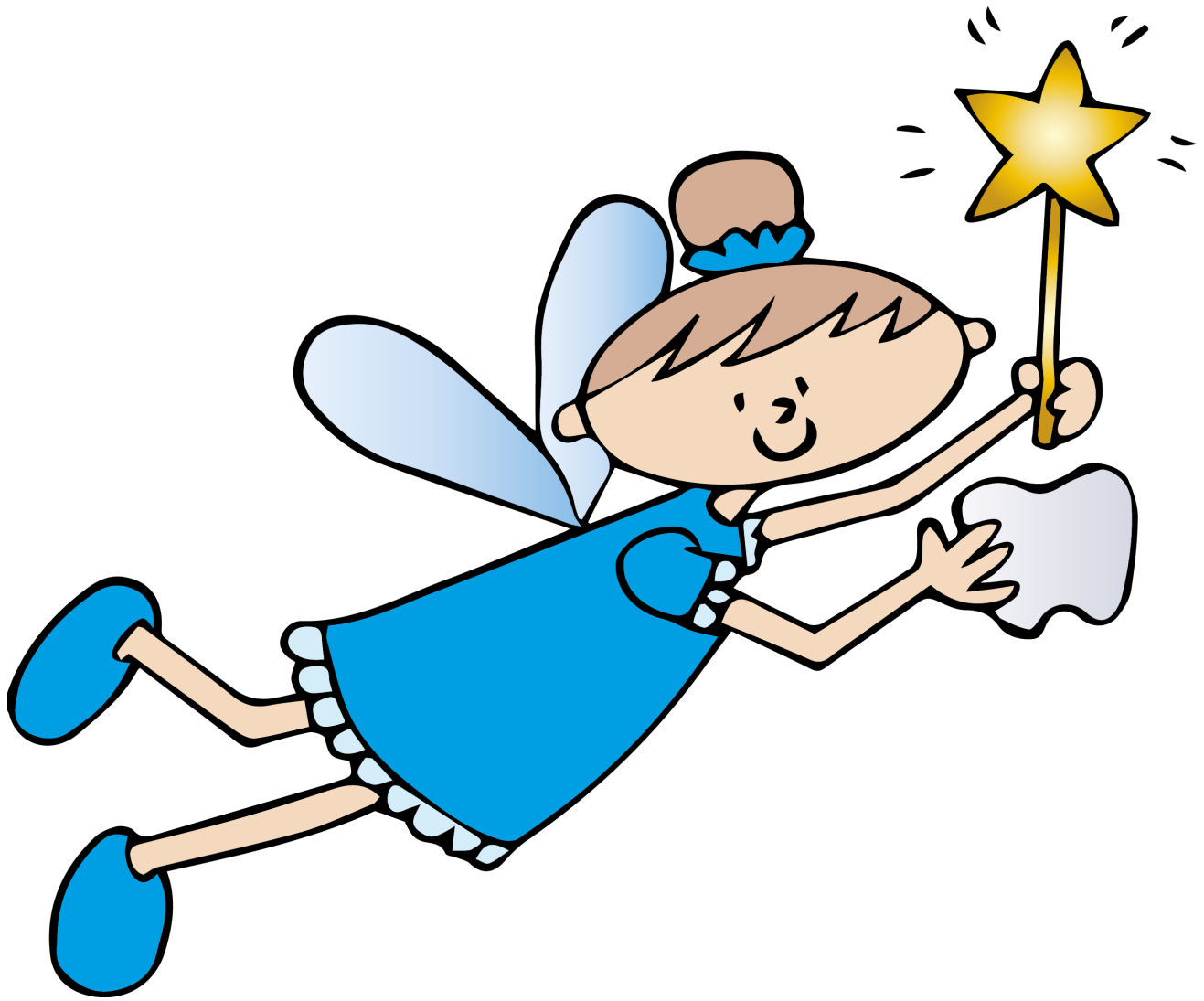
It required no management on my part and was a cute but meaningful addition to my classroom.

I hope you enjoy it too.

Julie

Thank you to LitaLita for providing the adorable clipart. Visit her store here:

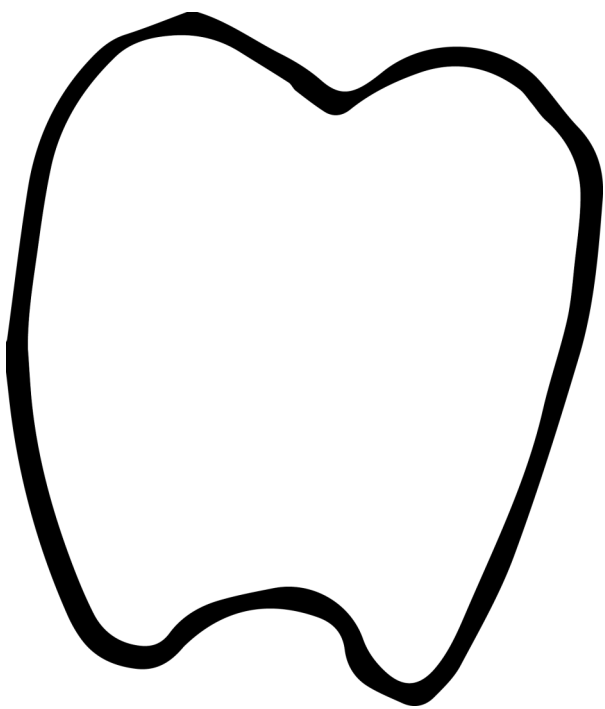
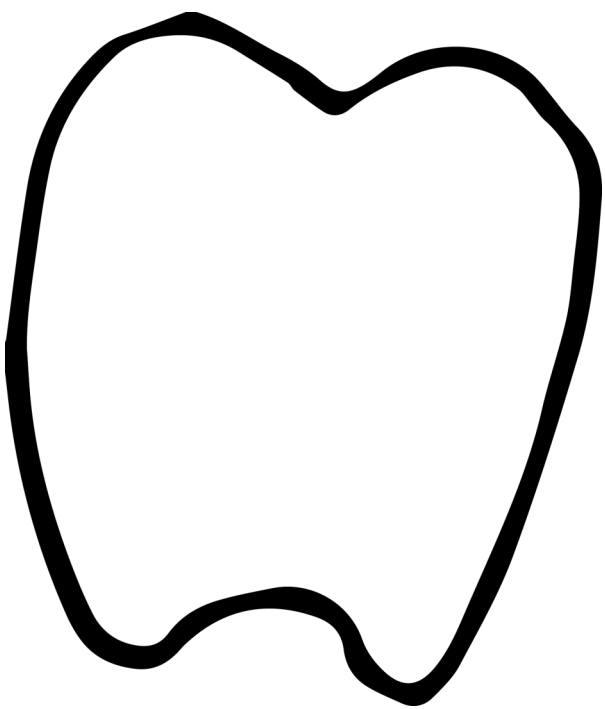
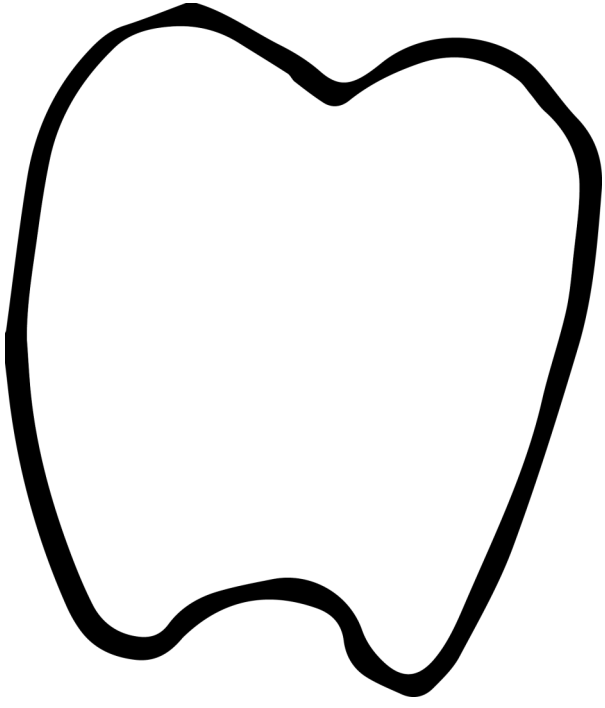
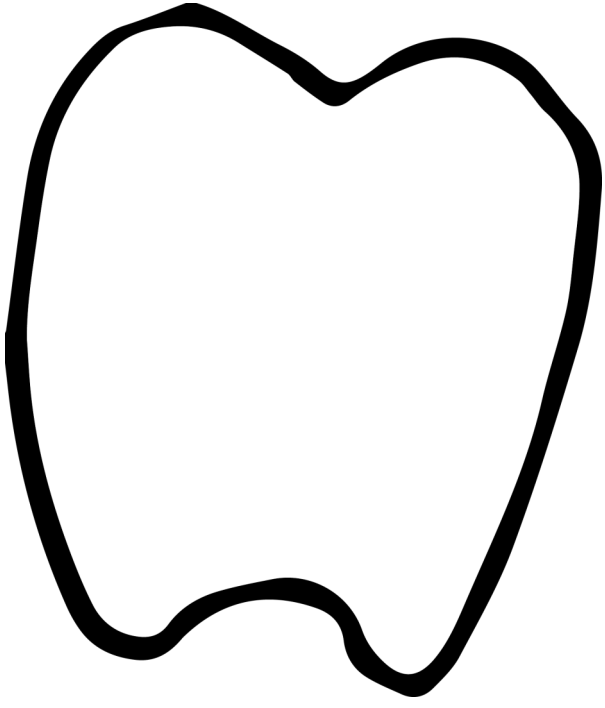
<http://www.teacherspayteachers.com/Store/Lita-Lita>



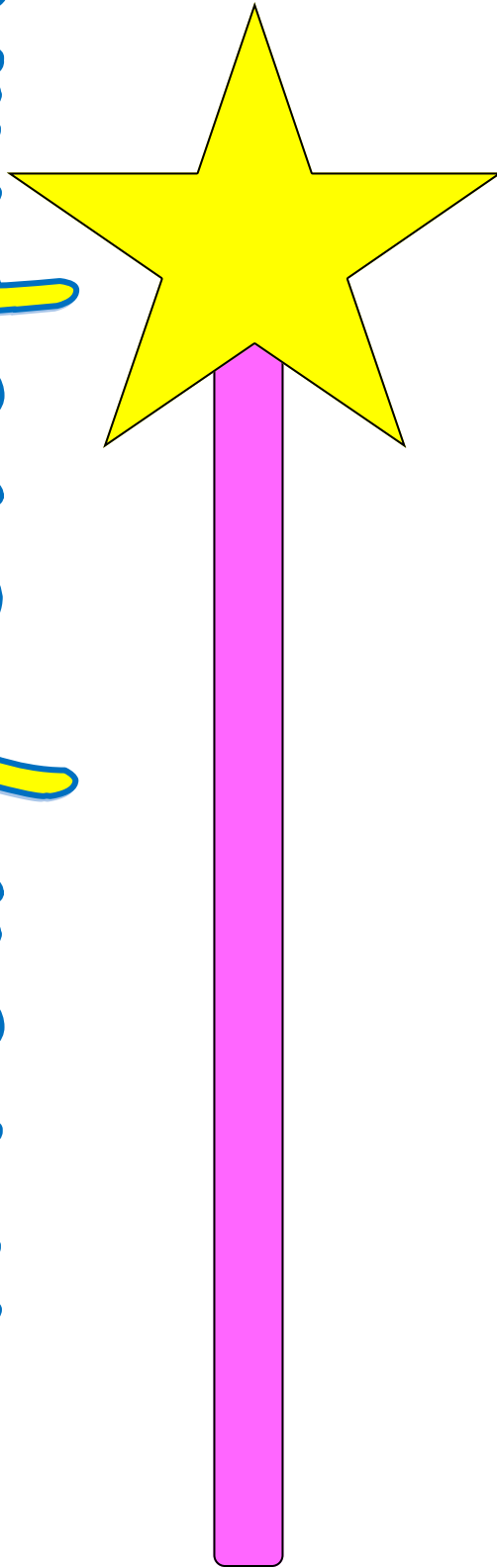
Boys



Girls



Tooth Fairy Graphing



Graph title to laminate and hang above the graph.

Tooth Fairy Graph is the intellectual property of JulieAldersonFoster.

Clip art by: LitaLita
([link on page 1](#))

All rights reserved.